

# *On the* **JOB**<sup>TM</sup>



# **2023 BUYERS'** **GUIDE**



# 0% FOR 24 MONTHS.\* \$0 DOWN. 0 HASSLE.



+  
**\$500**  
TOWARDS A  
CAT® CVA\*



**LET'S DO THE WORK.™**

844-349-4353  
[petersoncat.com/bcopper](http://petersoncat.com/bcopper)



\*Offer of 0% is for a loan term of 24 months which offer is only valid from January 1, 2023 through March 31, 2023 on new compact (compact track loaders, compact wheel loaders, micro/mini excavators, skid steer loaders) and small (backhoe loaders, telehandlers, small track type tractors, small wheel loaders) Cat® machines sold by participating Cat dealers to customers in the USA or Canada. The credit of up to \$500 USD for CVA purchase can only be applied toward the purchase of a qualifying Cat Customer Value Agreement (CVA). Purchases (both machine and CVA) and machine delivery must occur during offer period. Offer subject to machine availability and credit approval by Cat Financial. Not all customers will qualify. Amount of the CVA credit cannot exceed the price of the qualifying CVA. CVA must include 1-year Preventative Maintenance Parts Kit, TAI annual inspection, signed CVA contract, and Product Link™. Amount of credit towards CVA is the same for all models. Offer may change without prior notice and cannot be combined with any other offers. Additional terms and conditions will apply. Contact Peterson Cat for details.

# 04 CONTENTS

## DISCOVER THE CAT® ADVANTAGE

The 2023 annual *On the Job Buyers' Guide* is your single source for the complete line of Cat Building Construction Products and attachments. Provided compliments of our dealership, this easy-to-read guide includes all new models plus brief specs and highlights of each machine family. More complete information on each piece of equipment listed here can be found at [Cat.com](https://www.cat.com).

Keep this guide handy as a reference, and be sure to contact our dealership if you would like a closer look at a particular machine.

Be sure to read about new Cat VisionLink® on pages 28-29.

## LET'S DO THE WORK.™



- 04** SKID STEER LOADERS
- 06** COMPACT TRACK LOADERS
- 08** MINI EXCAVATORS
- 10** SMALL EXCAVATORS
- 12** WHEEL EXCAVATORS
- 14** BACKHOE LOADERS
- 16** DOZERS
- 18** WHEEL LOADERS
- 20** TRACK LOADERS
- 21** TELEHANDLERS
- 22** ATTACHMENTS
- 24** NEW VISIONLINK®
- 26** THE CAT RENTAL STORE

*On the Job*™ is published by High Velocity Communications Inc. on behalf of your Cat Dealer. Publisher, Tim O'Brien • Editor, John Rondy • Associate Creative Director, Jay Blazek • Director of Client Services, Kelly Pemper. Every attempt has been made to ensure specifications are accurate. Because specifications are subject to change without notice, check with us, your Cat Dealer, for the latest information. Some photography provided courtesy of Caterpillar Inc. High Velocity Communications Inc., 1720 Dolphin Dr., Suite D, Waukesha, WI 53186-1489. *On the Job* is a trademark of High Velocity Communications Inc. Phone 262.544.6600. Submit address corrections and changes via email to: [Kelly@HighVelocityCommunications.com](mailto:Kelly@HighVelocityCommunications.com). ©2023 High Velocity Communications Inc. All rights reserved. Printed in the U.S.A. **Volume 14 Number 1.** © 2023 Caterpillar. All Rights Reserved. CAT, CATERPILLAR, LET'S DO THE WORK, their respective logos, "Caterpillar Yellow", the "Power Edge" and Cat "Modern Hex" trade dress as well as corporate and product identity used herein, are trademarks of Caterpillar and may not be used without permission. VisionLink® is a trademark of Trimble Navigation Limited, registered in the United States and in other countries.

# Skid Steer Loaders

THE INDUSTRY LEADER IN OPERATOR COMFORT



## 226D3, 232D3, 236D3, 242D3, 246D3, 262D3, 272D3, 272D3 XE

Built for tough work, Cat® Skid Steer Loaders deliver outstanding reliability and efficient performance. Versatile and comfortable Cat® Skid Steer Loaders (SSLs) feature sealed, pressurized cabs and ergonomic controls so operators can focus on completing more work in less time. Available high-back, heated, air-ride seat with seat-mounted adjustable joystick controls makes the D3 Series the industry leader in operator comfort. D3 Series models also support a line of new SMART Attachments.

- › Gross Power: 67.1 hp to 110 hp
  - › Rated Operating Capacities: 1,550 lb to 3,700 lb
  - › The dual-direction, self-leveling, return-to-dig, and work tool positioner features automated machine functions to help facilitate repetitive tasks such as grading, digging and loading
  - › Available high-back, heated, air-ride seats include seat-mounted, adjustable joystick controls
  - › Sealed and pressurized cabs provide a cleaner, quieter work environment
  - › Speed Sensitive Ride Control option assures an even smoother ride with better material retention
  - › Available High-Flow, high-pressure hydraulic systems are designed to efficiently run even the most power-hungry attachments
- › Increased door opening angle (up to 40% wider) for easier entry and exit.
- › Wider spaced joystick pods deliver an additional three inches of space for increased operator comfort.
- › SMART Technology enables D3 Series machines to recognize when a SMART Attachment is connected, tailoring the existing machine controls to the needs of the connected attachment.



D3 SERIES HIGHLIGHTS



# Compact Track Loaders

GREATER OPERATING STABILITY

## 239D3, 249D3, 259D3, 279D3, 289D3, 299D3, 299D3 XE & 299D3 XE LAND MANAGEMENT

Cat® D3 Series Compact Track Loaders (CTLs) deliver improved operating stability while handling heavy loads, grading or truck loading. Improvements to the undercarriage frame and torsion axles reduce machine pitching and rocking, while still offering superior ride comfort. All Cat D3 Series CTLs feature standard two-speed travel to improve productivity. These machines are geared to deliver high-torque digging performance, as well as high top-end travel speed.

- Gross Power: 67.1 hp to 110 hp
  - Rated Operating Capacities: 1,530 lb to 4,340 lb – 35% tipping load
  - Standard, fully independent torsion axle suspension and Speed Sensitive Ride Control option assure a smoother ride and better material retention
  - The dual-direction, self-leveling, return-to-dig, and work tool positioner features automate machine functions to help facilitate repetitive tasks such as grading, digging, and loading
  - Industry-leading sealed and pressurized cab option provides a cleaner, quieter work environment
  - Available high-back, heated, air-ride seats include seat-mounted, adjustable joystick controls
  - Available Bar Tread style rubber tracks provide a smoother ride, lower ground disturbance, and improved traction in mud or snow
- Increased door opening angle (up to 40% wider) for easier entry and exit.
- Wider-spaced joystick pods deliver an additional three inches of space for increased operator comfort.
- SMART Technology enables D3 Series machines to recognize when a SMART Attachment is connected, tailoring the existing machine controls to the needs of the connected attachment.



D3 SERIES HIGHLIGHTS



### 299D3 XE LAND MANAGEMENT

Land Management and Debris Management packages are available for demanding vegetation-management applications, such as mulching, brush cutting, vegetation control and mowing.





# Mini Excavators

**NEXT GENERATION MINI EXCAVATORS FEATURES SET THE NEW STANDARD**

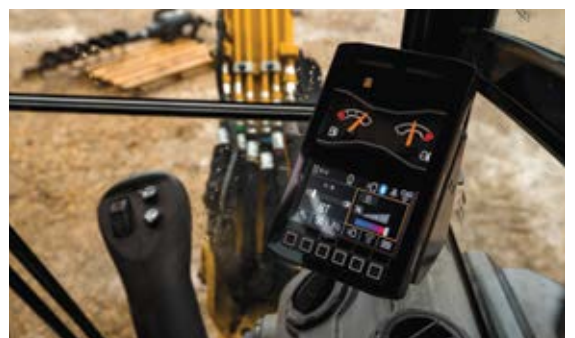
Cat® Next Generation Mini Excavators offer optimal performance, operator experience, safety and affordability with heavy-duty main structures, fuel-efficient engines, load-sensing hydraulics, spacious cabs and the exclusive Stick Steer system with cruise control. Next Gen Mini Excavators offer Ease of Use and Cat® Grade technology on select models to simplify machine operation and enhance productivity for both experienced and novice operators. These features help you get more done in less time.





**MINI 300.9D, 301.5, 301.7 CR, 301.8, 302 CR, 302.7 CR, 303 CR, 303.5 CR, 304, 305 CR, 306 CR, 307.5, 308 CR, 308 CR VAB, 309 CR, 309 CR VAB, 310**

- › Net Power: 13 hp to 69.5 hp
- › Operating Weights: 2,061 lb to 22,451 lb
- › All Next Generation mini excavators offer improved fuel efficiency, longer maintenance intervals and easy-to-access routine check points.
- › Higher digging forces, faster cycle times and enhanced uphill swing torque improve performance and efficiency.
- › A comprehensive range of Cat® attachments optimizes performance in a wide range of tasks.
- › Choose a standard-radius or compact-radius (CR) machine that's ideal for space-restricted jobsites.
- › First-to-the-industry Stick Steer with cruise control available on all models lets you easily switch from traditional travel controls with levers and pedals to joystick controls with the push of a button.
- › First-to-the-industry tilt-up canopy/cab on 1.5-3.5 ton machines provides easy access to service points, and saves time.
- › Quiet, spacious cabs and smooth ergonomic controls keep operators comfortable, increasing productivity and reducing fatigue.



# Small Excavators

PERFECT FOR SMALLER JOBS

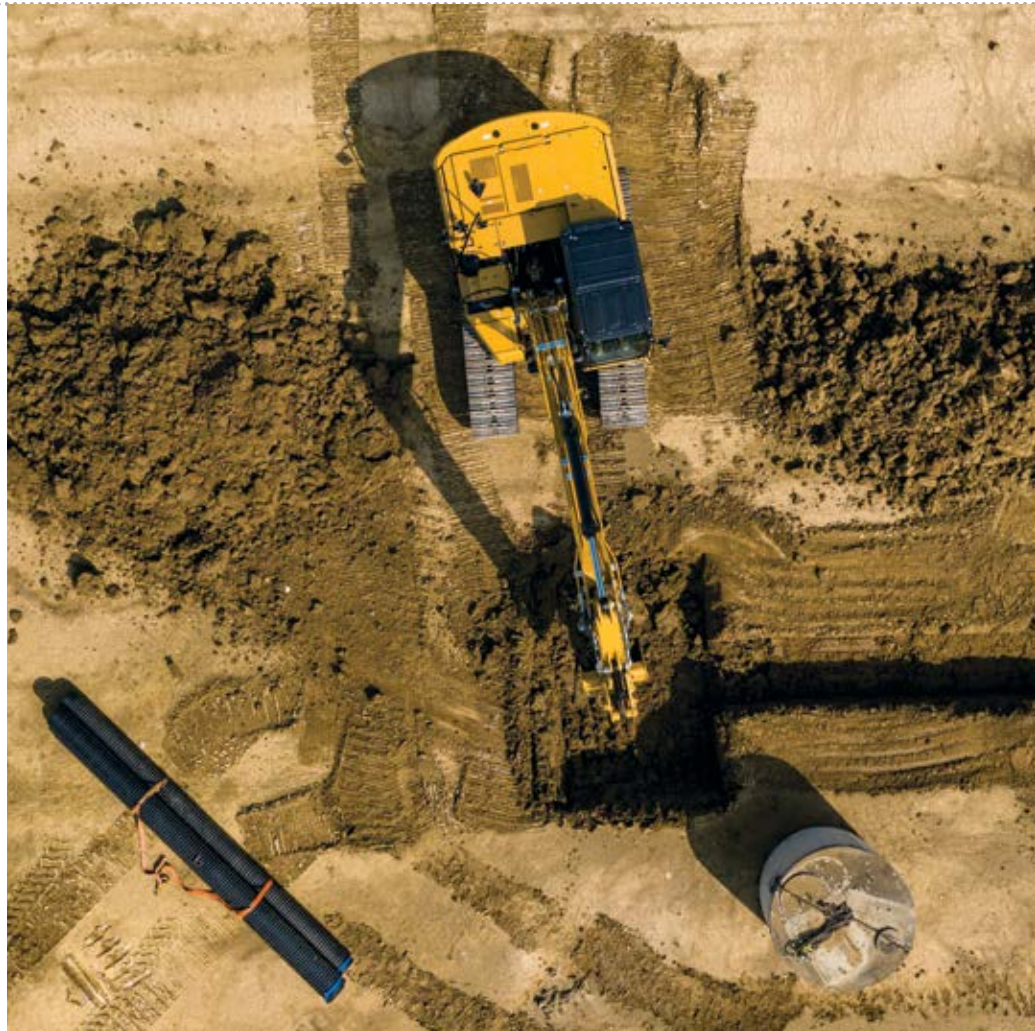


## SMALL 313 GC, 313, 315 GC, 315, 317 GC, 317

Cat® Small Excavators are perfect for smaller jobs and applications with space constraints. Powered by fuel-efficient engines and advanced hydraulic systems, these small excavators have exclusive Cat technology and a variety of matching Cat attachments to help you complete your work on time at a low cost per hour. As a productive and highly versatile solution for medium-duty applications, the compact radius design enables you to work in tight spaces without compromising performance. The 315 and 315 GC have a new, larger cab for enhanced operator comfort.

- › Net Power: 74 hp to 130 hp
- › Operating Weights: 30,400 lb to 40,200 lb
- › 313, 315, and 317 come standard with onboard machine technology, increasing operator efficiency up to 45%
- › Improved fuel efficiency delivers more work at lower cost
- › Higher digging forces and increased lifting capacity offer best-in-class versatility and performance
- › Sleek, in-cab LCD monitor is full-color, user-friendly and provides easy access to service, performance and maintenance tracking
- › Multiple Cat attachment options designed to fit the weight and horsepower of your machine improve performance, safety and stability
- › Lower maintenance cost up to 20% across entire small excavator lineup





---

# Wheel **Excavators**

**TRAVEL FASTER BETWEEN JOBSITES**



## M314, M315, M316, M318, M319, M320, M322

Cat® Wheel Excavators are extremely versatile machines, combining mobility, power and reliability in a single package. The wheeled design enables the excavators to work on city and residential streets where the lighter footprint will not damage pavement. The increased mobility of a wheel excavator helps you move quickly from job to job without the cost of specialized transport equipment.

- › Net Power: 134 hp to 174 hp
- › Operating Weights: 39,683 lb to 52,911 lb
- › Travel Speeds: Up to 23 mph
- › All models feature: Large, ergonomic, comfortable cab; fuel-saving features, longer maintenance intervals, and simplified maintenance access points for lower operating costs.
- › A full range of Cat work tools optimizes productivity.
- › The versatility and mobility of wheel excavators enable you to complete more jobs in less time, with fewer machines.
- › Best-in-class cab offers enhanced visibility; machines equipped with rear camera that displays on monitor inside cab.
- › Multiple auxiliary hydraulic options enable use of a wide range of attachments.





# BACKHOE Loaders

## VERSATILE PERFORMER

Cat® Backhoe Loaders provide superior digging, trenching, backfilling and material handling capabilities and can be used for many applications, including but not limited to general construction, demolition and excavation, landscaping, breaking asphalt and concrete. Cat Backhoes deliver the power and precise handling you need when operating in areas where using larger equipment is not practical. Cat Backhoe Loaders improve productivity and reduce your operating costs.

## 415, 416, 420, 420 XE, 430, 440, 450

- › Net Power: 70 hp to 131 hp
- › Digging Depths: 14 ft to 21.4 ft
- › Operating Weights: 24,251 lb to 29,321 lb
- › 420 XE delivers exceptional performance, increased fuel economy, superior hydraulic system, maximum versatility and updated, more-comfortable operator station.
- › Powerful, load-sensing hydraulic systems provide excellent response for improved hoe and loader productivity and greater bucket breakout forces, front and rear.
- › Spacious operator station with fingertip controls and multiple adjustments increases comfort and productivity.
- › Selectable Power Management Modes not only save fuel, but maintain machine performance.
- › Industry-leading versatility with an integrated toolcarrier provides a hydraulic coupler and increased loader performance compared to the single-tilt loader, as well as parallel lift.
- › Air-suspension seat and ergonomic controls provide a comfortable working environment.
- › Speeds up to 25 mph enable faster roading between jobsites.





# Next Gen **Dozers**

## **WORK FASTER, WORK SMARTER**

Cat® D1, D2, and D3 small dozers below 105 hp are designed to optimize operator comfort, versatility, speed, maneuverability, transportability, and deliver excellent finish-grading accuracy. These dozers are ideal for residential construction, including clearing and grading lots, slope/berm building, backfilling, and final grading work for landscaping and driveway projects.

To boost safety in hazardous conditions, Caterpillar now offers Cat Command remote operation for D1, D2 and D3 Dozers. It also comes standard on D5, D6 and D7 Dozers. Command for Dozing removes operators from the cab and provides remote operation from a safe distance in applications that have hazardous materials or unstable surfaces.

As your jobsite needs grow, Cat medium dozers through the D7 size help you move more material in less time. Greater fuel efficiency and features that make service and maintenance easier help you reduce your owning and operating costs. Plus, factory integrated GRADE technology features enhanced accuracy and speeds project completion.





## SMALL D1, D2, D3

- › Net Power: 80 hp to 104 hp
- › Operating Weights: 17,855 lb to 20,639 lb
- › Next Gen small dozers offer improved visibility, grade control and fuel economy to enhance productivity and provide significant cost savings.
- › Optional heated and ventilated air-suspension seat increases operator comfort
- › Eco Mode delivers extra fuel savings up to 20 percent.
- › Power Pitch option boosts productivity by enabling blade pitch to be adjusted hydraulically from the operator's seat.
- › Stable Blade Lift and Tilt feature complements operator blade control input, reducing fatigue while increasing productivity in finish-grading applications
- › Traction Control with Low Slip mode reduces track slip and undercarriage wear, even under maximum load.
- › Blade Load Monitor provides real-time feedback of current load vs. target load to fully utilize machine capacity benefiting operators of all skill levels. Automatically compensates for ground conditions. This feature is not available indoors or in areas where a GPS signal is not available.
- › AutoCarry™ raises and lowers the blade to maximize pushing capability and prevent excessive track slip when pushing heavy loads. GPS signal access required.
- › Cat® GRADE with Slope Assist, an optional grade control feature, helps you automatically achieve the desired blade mainfall and cross slope.
- › Scalable 2D and 3D Cat GRADE is an optional feature that makes your job up to 39% faster with up to 82% fewer operator inputs and less rework by maintaining blade angles for better surface quality, ideal for experienced and novice operators.



## MEDIUM D4, D5, D6, D6 XE, D7

- › Net Power: 130 hp to 265 hp
- › Operating Weights: 29,259 lb to 65,644 lb
- › Revolutionary D6 XE—world's-first High Drive, Electric Drive Dozer—delivers constant power to the ground, greater agility and faster cycle times.
- › New Cat D4 Dozer provides 30 percent better visibility with a sloped hood design, lower operating costs by increasing fuel efficiency/improving maintenance, and up to 50 percent more productivity with Cat Technology.
- › New Cat D5 dozer delivers superior, next-generation performance and unmatched productivity-boosting technology. Nimble and responsive, the D5 provides power for volume dozing and finesse for finish grading. Fully automatic transmission delivers seamless acceleration to complete jobs quickly.
- › D6 offers foldable blade design to enable transport without removing blade.
- › Updated GRADE with 3D and Slope Assist helps achieve top-quality results, while performance-boosting new technologies make machine operation easier and more efficient.
- › Choose either standard or Low Ground Pressure (LGP) undercarriage.
- › Waste Handling Configurations available from the factory for D5, D6 and D7.



# Wheel Loaders

FASTER CYCLE TIMES





Cat® Wheel Loaders make your material handling and loading jobs safer, faster, more precise and more profitable, while setting new standards for reliability, productivity, fuel efficiency, versatility and operator comfort. A state-of-the-art electro-hydraulic system provides low-effort, fine control with fast cycle times. An all-in-one joystick helps keep operator's eyes focused on the work.

## COMPACT 903D, 906, 907, 908, 910, 914, 920

- › Net Power: 42 hp to 121 hp
- › Operating Weights: 9,414 lb to 21,742 lb
- › New dual-setting feature is now standard on the 920's lift-kickout system
- › Cat C3.6 engine in 910 and 914 delivers greater horsepower, improved fuel efficiency
- › Strong breakout force and dependable performance are built in for fast cycle times
- › Superior reach, excellent visibility enable operators to place loads quickly
- › Spacious cabs with joystick controls keep operators comfortable throughout the workday
- › Optional Ride-Control system provides an even more comfortable ride and greater material retention over rough terrain
- › Skid steer loader-style coupler on the 903D, 906, 907 and 908 enables use of Cat Skid Steer Loader attachments for increased versatility
- › Tackle more jobs with one machine using the extensive line of Cat attachments

## SMALL 926M, 930M, 938M

- › Net Power: 168 hp to 188 hp
- › Operating Weights: 28,193 lb to 35,778 lb
- › A smooth, step-less, electronically controlled hydrostatic transmission automatically adjusts power to the ground
- › Large, spacious cabs feature excellent visibility, extremely low sound levels, automatic temperature control and ergonomic seat-mounted joystick controls
- › Predictable hydraulic systems sense demand and adjust flow and pressure to match
- › Optimized, parallel-lift Z-bar loader linkage combines powerful digging ability with toolcarrier capabilities for increased performance and versatility
- › Optimized Performance Series Buckets and other attachments are available with a Pin-On or Fusion™ Coupler interface



# Track Loaders

ONE GETS IT DONE



## 953, 963, 963 WH, 973K

As the most versatile machine on the jobsite, a Cat® Track Loader enables you to clear, dig, grade, load, carry and so much more, all with one machine. Work when and where other machines cannot. Track Loaders provide excellent traction and flotation in a range of ground conditions, so you can get to work while other machines sit on the sidelines. Tough jobs, rough terrain and tight spaces are no match for versatile Cat Track Loaders.

Special configurations equip your track loader for landfill and ship-hold unloading. The Waste Handling Arrangement features added guarding and seals on a purpose-built machine designed for the challenges of waste applications.

- › Net Power: 160 hp to 275 hp
- › Operating Weights: 34,594 lb to 63,900 lb
- › Increased horsepower enables excellent maneuverability, powerful excavating and efficient truck loading
- › Redesigned, ergonomic cabs provide greater operator comfort
- › Ideal for working in the toughest underfoot conditions on demanding construction, demolition and waste applications
- › Purpose-built waste handling configuration available for 953 and 963





# Telehandlers

## BEST ALL-AROUND VISIBILITY

TH255C, TL642, TL943, TL1055, TL1255

Proven design and advanced features combine to give Cat® Telehandlers the best all-around visibility and lead the industry in lift and reach capabilities. Top performance results from rugged construction that delivers reliability and durability with low operating costs. Designed to meet the many material-handling needs of the construction and agricultural industries, the comprehensive range of standard features and optional equipment widens the scope of application uses.

- › Gross Power: 74 hp to 134 hp
- › Rated Load Capacities: 5,500 lb to 12,000 lb
- › Maximum Lift Heights: 18.4 ft to 54.9 ft
- › Spacious cab and suspension seat keep operators comfortable all shift long
- › Three steering modes offer improved maneuverability on any terrain
- › Single-lever joystick contains all boom functions for easy operation
- › Hydraulic stabilizers—standard on the TL1055 and TL1255 models and optional on the TL642 and TL943 models—provide extra support and increased stability and capacity at reach for work on any terrain



# Attachments

## SAVE VALUABLE MAN-HOURS

Attachments enable you to tailor your Cat® machines to specific application requirements. Caterpillar attachments enhance the productivity and utility of Cat machines, equipping them for a wide range of tasks and operating requirements, while providing total system solutions for any job application. Choosing the right attachments enables you to bid on a broader range of jobs to help grow your business.

Frequently, one machine with multiple attachments can handle the work of many single-use machines, providing greater versatility, while saving valuable man-hours.

- › Tailor Cat machines to the specific requirements of your jobsites
- › Perform multiple tasks across a wider range of applications
- › Provide total system solutions and make short work of any task
- › Bid successfully on a broader range of projects
- › Enable one machine to perform the work of several single-task machines

## THE RANGE OF CAT® ATTACHMENTS INCLUDES:

- › Augers
- › Backhoes
- › Bale Handlers
- › Blades
- › Brooms
- › Brushcutters
- › Buckets
- › Carriages
- › Cold Planers
- › Compactors
- › Couplers
- › Cutters
- › Flail Mowers
- › Fork-Mounted Work Platforms
- › Forks
- › Grapples
- › Hammers
- › Lifting Hooks
- › Material Handling Arms
- › Mixing Buckets
- › Mulchers
- › Multi Processors
- › Plows
- › Pulverizers
- › Rakes
- › Rippers
- › Scarifiers
- › Shears
- › Side Discharge Buckets
- › Silage Defacers
- › Snow Blowers
- › Snow Plows
- › Snow Pushes
- › Stump Grinders
- › Thumbs
- › Tillers
- › Trenchers
- › Truss Booms
- › Wheel Saws
- › Winches



**Brushcutters**



**Compactors**



**Snow Pushes**



**Tillers**



**Stump Grinders**



**Brooms**





*Grapple Rakes*



*Mulchers*



*Material Handling Arms*



*Vibratory Plate Compactors*



*Snow Blowers*



*Truss Booms*



*Augers*



*Landscape Rakes*



*Hammers*



*Flail Mower*



*Power Box Rakes*



*Trenchers*



*Cold Planers*



# New VisionLink®

## TRANSFORMING EQUIPMENT MANAGEMENT

Gathering data to provide better information you can act on isn't new at Caterpillar. In fact, Caterpillar has been connecting assets and collecting equipment data since the 1990s. A portfolio of customer-friendly applications like the Cat App, My.Cat.com, and VisionLink® has existed for more than two decades. Each of these applications was initially focused on providing digital experiences for specific customers in technically demanding industries.

Of course, time and technology keep advancing, and the Cat digital team continually works to deliver a more seamless, best-in-class customer experience. VisionLink enables you to view fleet information online to make informed decisions that boost productivity, reduce costs, simplify maintenance, and improve safety on your jobsite.

This year, Caterpillar is rolling out a new, improved VisionLink solution that will meld all equipment management applications into one—providing you with a scalable, personalized experience at the swipe of a finger.

### Centralized Equipment Management

Caterpillar is providing customers with a hub for managing any-size fleet—including Cat machines and other brands—no matter if they are connected or not, or owned, leased or rented. The improved app will enable you to monitor hours, locations, and fuel use, set up maintenance alerts, assign work, request parts or service, and run reports. Plus, it will provide easy access to warranties, work orders, manuals, and service histories—helping increase machine resale value. Once you try new VisionLink, you won't want to be without it.







## Fleet Data Anytime, Anywhere

The improved VisionLink will offer a native mobile app that will enable you to manage your equipment, view utilization and geofencing, and more. No matter where in the world or on the jobsite you are, you can use VisionLink to help keep your equipment running at peak efficiency, wherever it's working.

## Advanced Fleet Management

Using telematics data from your machines, you can create custom dashboards with real-time updates on equipment condition. It will enable you to monitor machine health, analyze the impact of idle time, make quick, informed decisions, and manage your business with greater ease.

## Data Integration

Using Application Programming Interfaces (APIs), you can seamlessly integrate and view data from nearly all equipment in your fleet, utilizing any platform you choose.

Many of these capabilities already exist in various Cat apps, but the new VisionLink will improve the user interface and streamline the experience.

## Data-Driven Success

Today, you must accomplish more work in less time at lower costs to succeed. At the same time, equipment is becoming more complex. Cat equipment management tools and technologies help reduce owning and operating costs in a myriad of ways, including:

- › Identifying small problems before they turn into expensive repairs
- › Reducing fuel and labor costs by making well-informed business decisions
- › Avoiding unplanned downtime
- › Improving safety
- › Tracking workflow
- › Monitoring operator performance

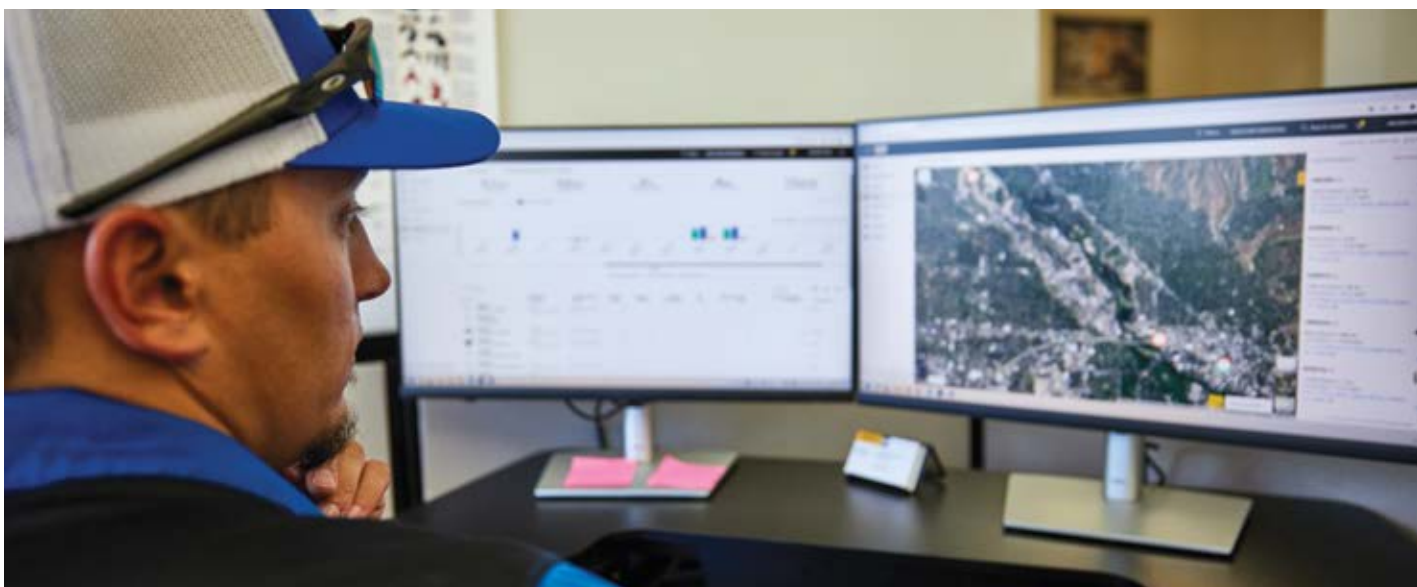
The new VisionLink solution will help you make faster, more-informed business decisions that positively affect your bottom line.

## Digital Commitment

It's no secret that technology is changing at an increasingly fast rate. It's one reason Caterpillar is committed to investing in all things necessary to make it easier for you to succeed. Some of the best and brightest minds are working on products and solutions focused on digital innovation.

Customer experiences are being transformed in ways that couldn't have been imagined a few short years ago—including a premium, customized equipment management service that enables you to build a better, more sustainable world.

***To learn how the new Cat VisionLink can enhance your operations, contact our dealership. We welcome the opportunity to demonstrate the new VisionLink and show you how it can be used to improve your business. [OTJ](#)***





# The Cat Rental Store

## CUSTOMER PORTAL MAKES YOU A BETTER MANAGER

**T**he [CatRentalStore.com](https://www.catrentalstore.com) customer portal makes it easy to manage and monitor your rental equipment, so you can find the information you need whenever you need it, using both desktop and mobile devices. You can work smarter by keeping track of your whole fleet with a single, user friendly interface.

On the website and mobile app, you can easily manage all your equipment rentals and operations, and digitally interact with our dealership.

You have more control over your account with the online, mobile portal that contains the following details and information for quick reference:

- › Active and upcoming rentals
- › Jobsite data
- › Invoices, rates and contract details
- › Telematics
- › Equipment status

Along with accessing these documents, you can use the portal to perform a variety of tasks, including requesting a quote, browsing rental equipment, and finding and contacting your nearest Cat dealer. You can also request on-site service for your equipment, transfer equipment between jobs and extend your rental contracts, all from one convenient interface.

### Benefits

- › Track your equipment and maintain open avenues of communication
- › Manage your account digitally instead of filing and storing paper contracts
- › Search for and find help without making a trip or a phone call
- › Access your account at any time, day or night, and immediately locate the information you need

The portal includes online telematics features from Cat® Product Link to provide even more insight into your fleet's operations. The GPS device on each machine monitors its location, fuel level and time utilization. This data enables you to increase productivity by ensuring your equipment assets are being efficiently deployed.

Find the equipment you need through our online inventory. Browse [CatRentalStore.com](https://www.catrentalstore.com) to jump-start your next project.

***To learn more about utilizing the [CatRentalStore.com](https://www.catrentalstore.com) customer portal to enhance the productivity and efficiency of your rental assets, contact your rental store representative or a member of The Cat Rental Store management team. [OTJ](https://www.cat.com)***

# BIG TO SMALL, CRESCO AND THE CAT RENTAL STORE HAVE IT ALL!

Cresco (in California) and Peterson - The Cat Rental Store (in Oregon and Washington) are your source for low-hours, top-of-the-line equipment from Caterpillar and other major brands. Whether you need a single machine for a day or a long-term, multi-unit rental, we're happy to help. We'll even bring the gear to you!



Visit us online at [crescorent.com](http://crescorent.com)  
and [petersonrents.com](http://petersonrents.com) or call  
**800-RENT-CAT** today!





# IT'S HOW PETERSON CAT SAYS THANK YOU!

It's easy. Refer a new customer to Peterson Cat and get a 27-quart Cat cooler when they purchase any new Cat machine!

You may refer as many customers as you like, as often as you like. Get started today!

[www.petersoncat.com/referral](http://www.petersoncat.com/referral)



Prior sales are not eligible. A new customer is defined as someone who has never purchased a machine from Peterson Cat. All referrals must be submitted online before the NEW customer being referred purchases a new machine from Peterson. Referring customer will receive a confirmation letter upon the full funding of the customer's purchase.

**LET'S DO THE WORK.™**

**844-349-4353**

